

Historical Background

Immaculate Conception of St. Mary Parish was organized in approximately 1860. Prior to 1869, the parish was attended as a mission of Kewaunee. In 1869 Bishop Joseph Melcher was assigned the first resident pastor.

By 1871 many new members joined the church and it became necessary to build a second church. In 1872 the second church, 85 feet by 45 feet by 24 feet high was built and dedicated in honor of the Immaculate Conception of the Blessed Virgin Mary.

A parochial school was established in 1876. In 1884 The Sisters of St. Francis of Alverno took charge of the school. Classes were taught in the old church until a school was built in 1893. The school still operates today.

From 1878-1894 Fr. Adalbert Cipin served the parish. During this time he built the altars we still have today. In 1896, Msgr. William Kraemer was appointed as pastor and continued to serve for 48 years until 1944.

In 1904, the first move was made to build a third church. This new church was completed in December 1906 at a cost of \$74,938.53. In 1909, the improvements were made to the rectory at a cost of \$1898.00. In 1910, the main altars were considerably enlarged. In 1922, the side altars were remodeled, making them match the main altar.

In 1950, the number of children had exceeded the capacity of the school, therefore a new 10-room school and gymnasium was erected. Construction of a new convent began 1955. With decline in Sisters teaching at the school, in 1984 the convent was turned into a home for the elderly. This later was sold to a private concern in 1994.

In 1970, the church was redecorated and repainted. It remained this way until 1985 when major renovations took place. In 1993 a chair lift was installed to permit handicap access to the church basement. In 2002 renovations included new plastering, carpeting and lighting, a raised choir area, new reconciliation room, accessible entry and new doors.

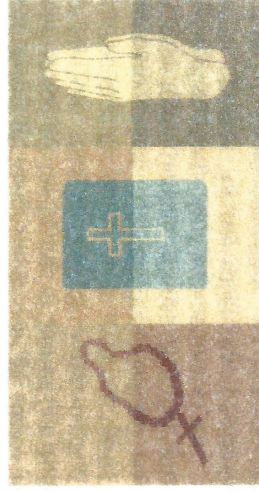
Pipe Organ: The pipe organ dates back to 1914. It was rebuilt in 1974 with occasional repairs to this day.

Grotto: in 1960 a grotto was built in honor of Our Lady of Lourdes. This grotto is located between the school and the Church Street entrance.

Today, in keeping with the spirit and the Second Vatican Council, St. Mary Parish is an active and alive community drawing upon the gifts, talents, and ministry of its members. Active Parish Pastoral committees include Evangelization, Worship, Total Board of Education, Stewardship, Finance, and Buildings and Grounds. The Rite of Christian Initiation for Adults (RCIA) is available for those wishing to explore the possibility of becoming Catholic.

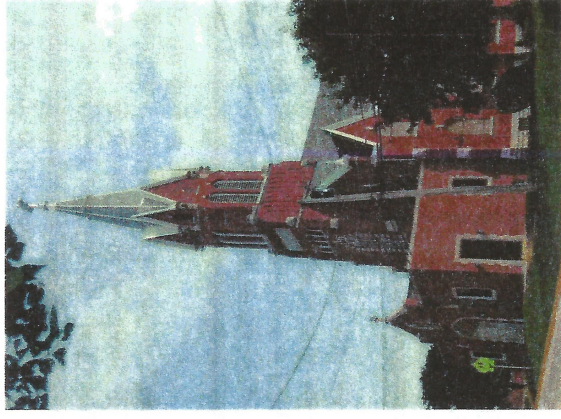
Mission Statement

*With our eyes fixed on the Risen
Lord Jesus Christ—
Conformed to his image in
Baptism and the Eucharist—
We grow together in our
Gospel faith—
And our understanding of
our rich Catholic tradition—
Building the Kingdom by
living in gratitude—
Reaching out generously to all
people in need.*



*One of our blessings are the many visitors who
come to our beautiful lakeshore community.
We encourage you to join us in worship.
Come and enjoy our Parish Community!*

You are invited to St. Mary Catholic Church



Come Worship with us!

Located on "The Top of the Hill"
118 Church St.

Algoma, WI 54201

(920)487-5005

www.stmarysalgoma.com

Weekend Services:

Saturdays: January 1st-June 30th 5:30PM

July 1st-December 31st 4:00PM

Sundays 8:15AM